

Frameless Construction

1 Box Construction

5/8" thick wood based composite panel. Front face of cabinet is edge banded with PVC in color matching the door. Hanging rails, stretchers and toe kicks have a 2-dowel application.

2 End Panels

5/8" thick wood based composite panel with matching laminate exterior surfaces. Cabinets will come with white laminate interiors. Bore and dowel construction reinforced with glue. End panels are not textured.

3 Top/Bottom Panels

5/8" thick wood based composite panel with matching laminate exposed exterior surfaces. Cabinets will come with white laminate interiors.

4 Hanging Rails

5/8" thick x 4 1/2" high wood based composite panel. Hanging rails run the full width of the cabinet. Multiple hanging rails may be included depending on cabinet height/configuration.

5 Back Panel

Nominal 1/8" (3mm) thick hardboard with white laminate interior surface. Back panels are dadoed into case construction and reinforced with glue. Back panels are fully captured on all cabinets.

6 Shelves

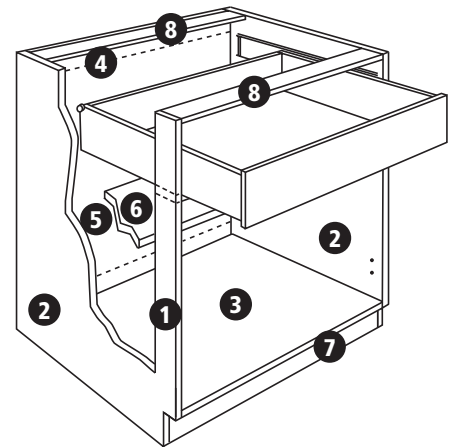
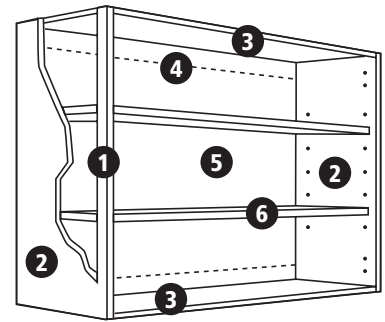
3/4" thick wood based composite panel with white laminate on both faces and matching edge band on front edge. Shelves are adjustable in all cabinets. Wall, base, 12" deep tall bookcase and vanity cabinets receive 10 1/2" deep shelves; tall cabinets receive 22 1/2" deep shelves.

7 Toe Kick

5/8" thick x 4 1/2" high wood based composite panel captured between end panels. Toe kick is recessed 4".

8 Cross Support Stretchers

5/8" thick x 4 1/2" deep wood based composite panel running the width of most base and vanity base cabinets, with matching edge band for front face.



Drawers

Standard: White Metal Drawer

German engineered, made in the USA, 3/4 extension drawer system. Integrated drawer slide and drawer side with white baked-on epoxy finish. Self-closing feature with 60mm closing range. Built-in drawer front bumpers. Load capacity of 75 lbs. Sides are 1/16" thick metal. Drawer bottoms and backs are 5/8" thick wood based composite panel with white laminate on both faces and matching edge band on top edge. Assembly construction is machined and pressed into sides for precision fitment.

Upgrade: Dovetail Drawer

Front, back and sides are nominal 5/8" (16mm) thick hardwood with dovetail construction. Drawer bottoms are nominal 1/4" (6mm) thick multi-ply hardwood plywood inserted into dado in front, back and sides. Includes high-quality steel, undermount soft-close drawer guides that help reduce drawer slamming. Self-adjusting in mounting brackets. Built-in stop, self-closing and stay closed features with a 75 lb rated load capacity.

Hinges

Standard: Heavy-duty, high-quality steel, concealed 6-way adjustable hinge with self-closing feature.

Upgrade: Gentle-Touch (soft-close) hinge – heavy-duty, high-quality steel, concealed 6-way adjustable hinge with soft close resistance.

NOTICE: The product specifications appearing herein supersede and cancel all previous sheets, supplements and addenda, and represent current manufacturing standards and procedures. We reserve the right to make specification changes for continued product improvement.