

ADVANTA<sup>®</sup>  
C A B I N E T S

studio  
full access<sup>®</sup>  
BY ADVANTA CABINETS

Spring 2024





## Versatility & Value.

Introducing Advanta Cabinets—a trusted brand, re-imagined. Developed with modern multi-family living in mind, Advanta offers quality construction and design appeal for large scale projects.

Whether your project design calls for traditional or modern, framed or frameless, Advanta offers the flexibility, quality, and value your project needs.

Each project is different, but every multi-family development follows a similar road to completion. Our experienced sales and support teams are dedicated exclusively to our multi-family partners and provide the expertise needed to help you tackle the challenges of even the largest projects. Plus, with capabilities from coast to coast, we deliver the same great quality no matter the project location.

Thoughtfully designed to meet the specific needs of the multi-family industry, we're excited to help you re-discover Advanta Cabinets.



Gallery Frameless Thermofoil Laminate in Shiitake and Coconut Husk  
COVER: Saxton Full Overlay Paint Grade in Dove Grey



Avalon Frameless Thermofoil Laminate in Grey Cashmere and Fashion Grey

# The Freedom of Flexibility

Advanta is pleased to offer partners the choice of both framed and frameless cabinet construction, because every project is unique.



**FRAMED** ➤

Amundsen Full Overlay Thermofoil Laminate in Hurricane

With a variety of door styles—including flat panel, raised panel, shaker-style, and slab—available in half or full overlay, our framed options can elevate designs from traditional to contemporary. Our framed product line features finishes in paint, stain, thermofused melamine, and thermofoil laminate.



# FRAMELESS

Madison Frameless Thermofused Melamine  
in Farmhouse

When your project calls for a more contemporary design, consider the numerous frameless options from Studio Full Access by Advanta Cabinets. Pair flat panel, shaker-style, or slab options with paint, thermofused melamine, or thermofoil laminate finishes, to create looks that last at a variety of price points.

# ADVANTA<sup>®</sup>

C A B I N E T S

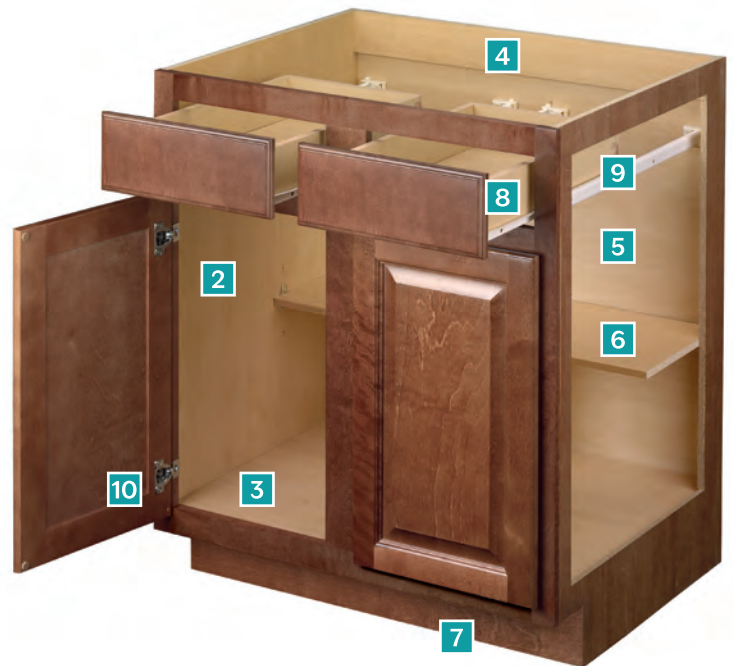


# FRAMED



# Framed Construction

- 1 FRONT FRAME**  
3/4" thick kiln dried hardwood: stiles and rails 1-1/2" wide, mullions 3" wide.
- 2 END PANELS**  
Nominal 1/2" (12mm) thick wood based composite panel with matching laminate exterior surfaces and natural maple laminate interiors. Optional upgrade available.
- 3 TOP/BOTTOM PANELS**  
Nominal 1/2" (12mm) thick wood based composite panel with natural maple laminate exterior and interior surfaces for wall cabinets and interior surface for base cabinets.
- 4 HANGING RAILS**  
Nominal 1/2" (12mm) thick x 4-1/2" wood based composite panel hanging rail running the full cabinet width at top for all cabinets; wall cabinets receive an additional hanging rail at the bottom.
- 5 BACK PANEL**  
Nominal 1/8" (3mm) thick hardboard with natural maple laminate interior surface.
- 6 SHELVES**  
Nominal 3/4" (18mm) thick wood based composite panel with natural maple laminate on both faces and matching edge band on front edge. Shelves are adjustable in all standard cabinets.
- 7 TOE KICK**  
Nominal 1/2" (12mm) thick unfinished wood based composite panel captured between end panels. Toe kick is 4-1/2" high and recessed 3-1/2".
- 8 DRAWERS**  
Nominal 5/8" (16mm) thick solid wood front, back, and sides with dovetail construction. Drawer bottoms are nominal 1/4" (6mm) thick multi-ply hardwood inserted and stapled into dado in front, back and sides.
- 9 DRAWER GUIDES**  
High-quality epoxy coated steel, self-adjusting in mounting brackets. Built-in stop, self-closing and stay-closed features with a 75 lb. rated load capacity. Optional upgrade available.
- 10 HINGES**  
Heavy-duty, high-quality steel, concealed 6-way adjustable hinge with self-closing feature. Optional upgrade available.



## Additional Construction Options

### ALLWOOD CONSTRUCTION

- Hardwood plywood shelves, end panels, back panel, and top/bottom panels.
- Available in all door styles and finishes.

### ALLWOOD PLUS CONSTRUCTION

- Hardwood plywood shelves, end panels, and top/bottom panels.
- Nominal 1/4" (6mm) thick hardwood plywood back panel.
- Nominal 3/4" (18mm) thick ACQ\* pressure treated toe board captured between end panels.
- Nominal 1/2" thick (12mm) x 2-7/8" wide plywood base Ibeam braces running full-depth front to back of cabinet.
- Available in maple and hardwood stained door styles only.

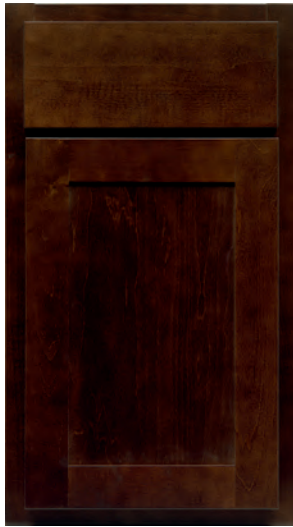


# Framed Door Styles

## Hardwood Door Styles

Advanta hardwood doors offer versatility and quality for projects of any size and budget.

Hardwood doors feature 3/4" thick door frames and drawer fronts, 5-piece mortise and tenon joinery, and veneer center panels.



**Rydal**  
Half Overlay

- Shaker door with 2-1/4" rails and stiles
- Slab drawer fronts



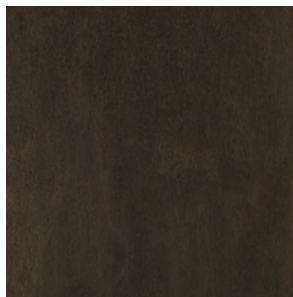
**Stockdale**  
Half Overlay

- Flat panel door with 2-1/4" rails and stiles
- Slab drawer fronts

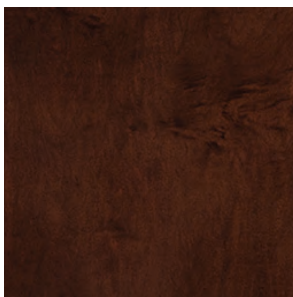
## Hardwood Stain Finishes



Autumn Brown



Nuvoloso



Coffee



Luna



Rydal Half Overlay Hardwood in Luna

# Framed Door Styles

## Maple & Paint Grade Door Styles

With a broad variety of maple and paint grade door styles, enjoy flexibility in design and a wide array of options to elevate any space. All 5-piece doors feature 3/4" thick door frames and drawer fronts, 5-piece mortise and tenon joinery, and veneer center panels for stained products. Unless otherwise noted, the primary material for slab doors and 5-piece painted doors will be HDF.



### Belmar

Half Overlay, Full Overlay

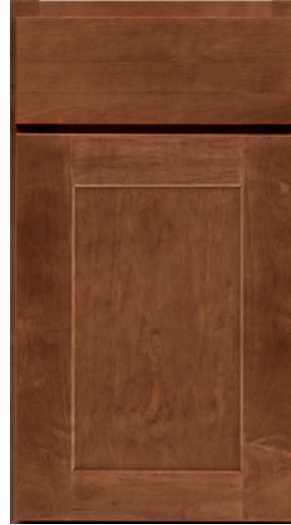
- Flat panel door with 2-3/4" rails and stiles
- Slab or 5-piece\* drawer fronts



### Calibra II

Half Overlay, Full Overlay

- 3/4" thick doors and fronts
- Solid door; hardwood door for paint finishes
- Slab drawer fronts



### Hamburg

Half Overlay, Full Overlay

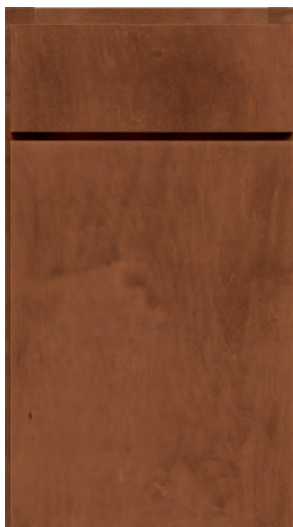
- Shaker door with 3" rails and stiles
- Slab or 5-piece\* drawer fronts



### Hector

Half Overlay, Full Overlay

- Flat panel door with 2-1/4" rails and stiles
- Slab drawer fronts



### Novara

Full Overlay

- 5/8" thick doors and fronts
- Veneer edge banded door; HDF door for paint finishes
- Slab drawer fronts



### Rydal

Half Overlay, Full Overlay

- Shaker door with 2-1/4" rails and stiles
- Slab or 5-piece\* drawer fronts
- Painted doors use hardwood material for the rails and stiles



### Saxton

Half Overlay, Full Overlay

- Raised panel door with 2-1/4" rails and stiles
- Slab drawer fronts
- Painted products use hardwood rails and stiles; center panel may be MDF or veneer



### Stockdale

Half Overlay, Full Overlay

- Flat panel door with 2-1/4" rails and stiles
- Slab drawer fronts
- Painted products use hardwood rails and stiles; center panel may be MDF or veneer

\*Available on full overlay only

# Framed Door Styles

## Maple Stain Finishes



Crystal\*



Silvergrass\*



Toffee



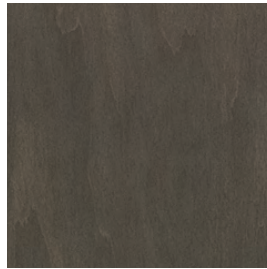
Pecan



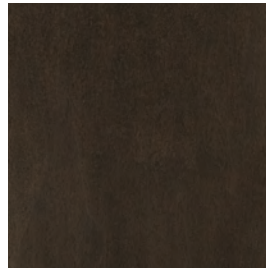
Storm



Autumn Brown



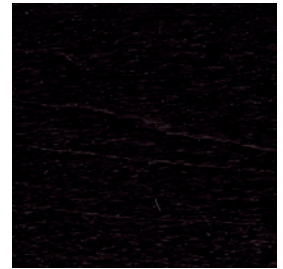
Graphite



Nuvoloso



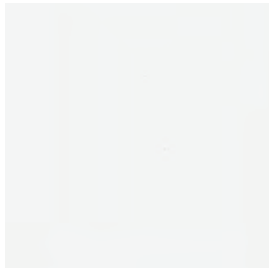
Coffee



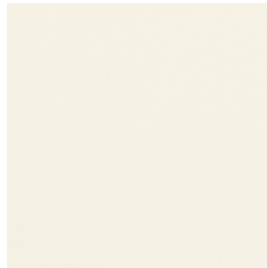
Luna

\*Finish option not available on Calibra II

## Paint Finishes



Alpine White



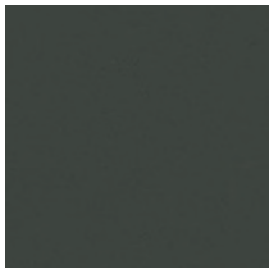
Linen



Dove Grey



Baltic



Hurricane



Hamburg 5-Piece Full Overlay Paint Grade in Alpine White and Baltic

# Framed Door Styles

## Thermofoil Laminate & Thermofused Melamine Door Styles

Achieve modern and durable design with Advanta thermofoil laminate and thermofused melamine doors styles.



### Amundsen

Full Overlay

- 3/4" thick doors and fronts
- Routed shaker style with 2" rails and stiles
- Slab drawer fronts
- Doors are backed with white low pressure melamine



### Calvin

Full Overlay

- 3/4" thick doors and fronts
- Slab door
- Slab drawer fronts
- Doors are backed with white low pressure melamine



### Avenue

Half Overlay, Full Overlay

- 5/8" thick doors and fronts
- Thermofused melamine on front and back sides of doors
- Slab drawer fronts

## Thermofoil Laminate Finishes



Diva



Silvergrass



Exotic White

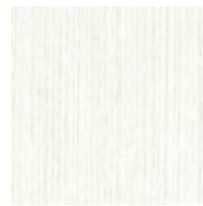


Grey Cloud



Hurricane

## Thermofused Melamine Finishes



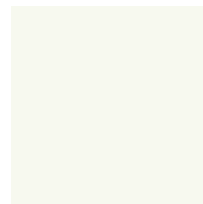
Classic White



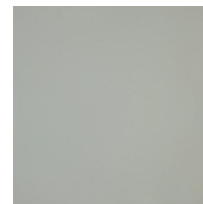
White Chocolate\*



Silvergrass\*



Bone



Grey Cloud

\*Finish option not available on Avenue Half Overlay

NOTE: Amundsen, Calvin and Avenue cabinet face frames, end panels and accessories come in complementary colors. Customer sign-off is required before orders can be placed; see account manager for details.



Belmar Full Overlay Paint Grade in Dove Grey



Stockdale Half Overlay Paint Grade in Hurricane

**studio**  
**full access**<sup>®</sup>  
BY ADVANTA CABINETS



# FRAMELESS



Madison Frameless Thermofused Melamine in Chipmunk

# Frameless Construction

- 1 END PANELS**  
5/8" thick wood based composite panel with matching laminate exterior surfaces and white laminate interiors.
  - 2 TOP/BOTTOM PANELS**  
5/8" thick wood based composite panel with matching laminate exterior surfaces and white laminate interiors.
  - 3 BACK PANEL**  
1/8" (3mm) thick captured back panel. Interior surfaces match case interior.
  - 4 SHELVES**  
Nominal 3/4" (18mm) thick wood based composite panel with white laminate on both faces and matching edge band on front edge. Shelves are adjustable in all standard cabinets.
  - 5 TOE KICK**  
5/8" thick x 4-1/2" high wood based composite panel captured between end panels and recessed 4".
  - 6 CROSS SUPPORT STRETCHERS**  
5/8" thick x 4-1/2" deep wood based composite panel cross support stretchers running the width of the cabinet.
- DRAWERS & DRAWER GUIDES**
- 7** Integrated drawer slide & drawer side with white baked-on epoxy finish. Self-closing feature with 60mm closing range. Load capacity of 100 lbs. Sides are 1/16" thick metal. Drawer bottoms and backs are 5/8" (15mm) thick wood based composite panel faced with white laminate. Optional upgrade available.
- HINGES**
- 8** Fully concealed, 110 degree, 6-way adjustable hinges. Optional upgrade available.





# Frameless Door Styles

## Paint Grade Door Styles

Studio Full Access painted door styles add a classic touch to modern designs. Whether flat panel or slab, achieve chic sophistication in any project.

All 5-piece doors feature 3/4" thick door frames and drawer fronts and 5-piece mortise and tenon joinery. Unless otherwise noted, the primary material for slab doors and 5-piece painted doors will be HDF.



### Berks

- Flat panel door with 2-3/4" rails and stiles
- Slab or 5-piece drawer fronts



### Halifax

- Flat panel door with 2-1/4" rails and stiles
- Slab drawer fronts



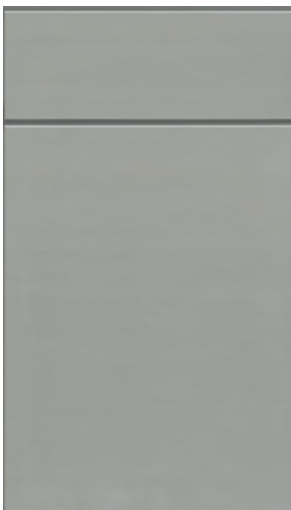
### Henry

- Shaker door with 3" rails and stiles
- Slab or 5-piece drawer fronts



### Rowland

- Shaker door with 2-1/4" rails and stiles
- Slab or 5-piece drawer fronts
- Hardwood rails and stiles; MDF center panel



### Silvio

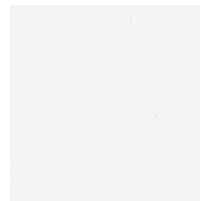
- 5/8" thick doors and fronts
- Slab drawer fronts



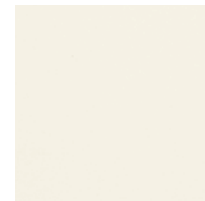
### St. Croix

- Flat panel door with 2-1/4" rails and stiles
- Slab drawer fronts
- Painted doors use hardwood material
- Hardwood rails and stiles; center panel may be MDF or veneer

## Paint Finishes



Alpine White



Linen



Dove Grey



Baltic

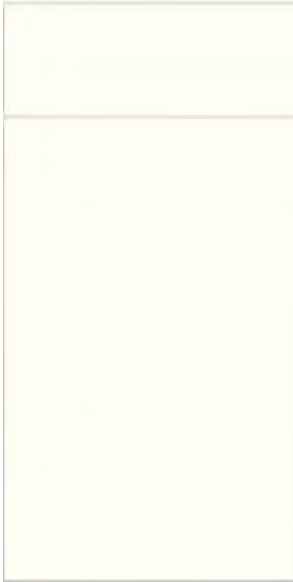


Hurricane

# Frameless Door Styles

## Thermofoil Laminate & Thermofused Melamine Door Styles

Create sleek contemporary looks with Studio Full Access thermofoil laminate and thermofused melamine door styles.



### Avalon

- 3/4" thick doors and fronts
- Slab door
- Slab drawer fronts
- Doors are backed with white low pressure melamine



### Gallery

- 3/4" thick doors and fronts
- Routed shaker style with 2" rails and stiles
- Slab drawer fronts
- Doors are backed with white low pressure melamine



### Madison

- 5/8" thick doors and fronts
- Thermofused melamine on front and back sides of doors
- Slab drawer fronts



Avalon Frameless Thermofoil Laminate in Beach Day and Hurricane

# Frameless Door Styles

## Thermofoil Laminate Finishes



Diva



Parchment



Beach Day



Grey Cashmere



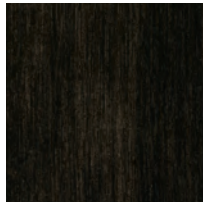
Local Honey



Wheated Bourbon



Somber Grey



Coconut Husk



Starlight White



Exotic White



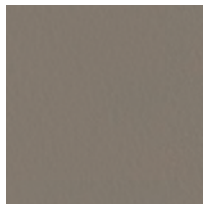
Fashion Grey



Shiitake



Grey Cloud



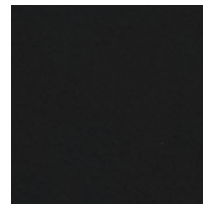
Stone



Veridian



Hurricane



Charcoal

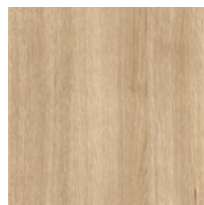
## Thermofused Melamine Finishes



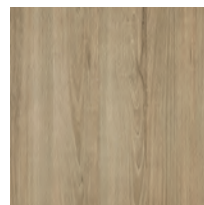
White Chocolate



Natural Elm



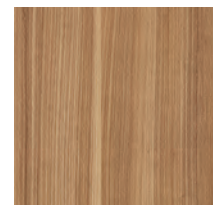
Flaxen



Grey Cashmere



Farmhouse



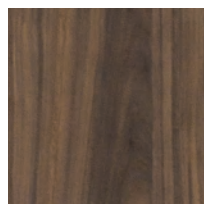
Richmond Cherry



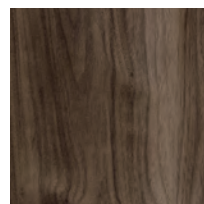
Filbert



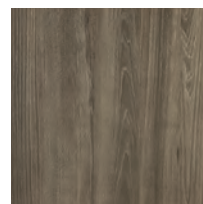
Chipmunk



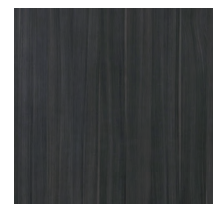
Stag



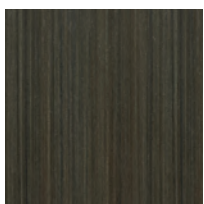
Nut



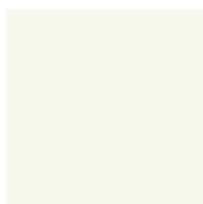
Somber Grey



Graphite



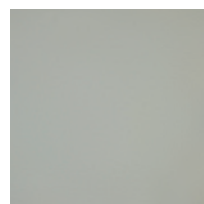
Winter Bark



Bone



Fashion Grey



Grey Cloud



Halifax Frameless Paint Grade in Alpine White

[WWW.ADVANTACABINETS.COM](http://WWW.ADVANTACABINETS.COM)

Actual colors may vary slightly due to variations in screen color. For full color accuracy, please view a sample. Material dimensions listed may vary slightly from actual dimensions of the product. Construction and assembly methods may vary from what is shown in samples and imagery, but do not affect performance standards of products.



A Cabinetworks Group brand

Advanta Cabinets products are compliant with ANSI A161.1 - 2022 Performance and Construction Standard for Kitchen and Vanity Cabinets.

